

FOR IMMEDIATE RELEASE
April 21, 2023

DC's Newest Museum Celebrates the Jewish Experience in the National Capital Region
The Capital Jewish Museum inspires visitors to connect, reflect, and act

Washington, D.C. – The Lillian and Albert Small Capital Jewish Museum is the first museum in DC dedicated to the story of Jewish life in the nation's capital region. The Museum will open on June 9, 2023 at the corner of 3rd and F Streets NW, welcoming visitors of all ages and backgrounds to explore and connect with local Jewish history and the intersections between cultural identity and social activism. Featuring interactive tables, film, historic photographs, and artifacts, the Museum dives deep into history while also creating space for current policy discussion with cutting-edge new technology and exhibit design.



Artistic rendering, 575 3rd St NW, Washington, DC, SmithGroup.

The 32,000 square foot, four-floor, LEED silver-certified Museum features a terrace with views of the Capitol, lobby atrium, flexible education space, three floors of exhibition galleries, and the largest and best-known artifact – Washington's oldest purpose-built synagogue, which has been moved to its new location and restored. Most of the Museum's collections and archives will be stored on site near the 4th floor staff offices. The Gewirz Gift Shop in the main lobby will offer books and items inspired by the collection and exhibitions. The new Museum's design serves as a transition to the neighborhood's large-scale mixed-use development, while cradling the landmark building in a light-filled envelope.

SmithGroup, one of the largest architecture, engineering, and planning firms in the country, designed the Museum. Their portfolio includes the National Museum of African American History and Culture and the White House Visitor Center. Exhibition designers Design Minds, interactive designers Potion Design, and film producers Northern Light Productions and Video

Art Productions worked closely with Museum staff to develop state of the art exhibitions and experiences.

“The design of the Museum aligns seamlessly with our mission and values of fostering connection, reflection, and action,” says Esther Safran Foer, Board President of the Capital Jewish Museum. “We are overjoyed to extend an invitation to visitors from Washington and beyond, to join us in experiencing and cherishing this remarkable space for many generations to come.”

The Museum's collection includes more than 24,000 digital and print photographs, 1,050 objects, and 800 linear feet of archival materials from the 1850s to the present day, including oral histories, personal papers, and business and organizational records. These collections provide a multifaceted portrait of local Jewish life and form the base of the inaugural exhibitions and also provide research materials for scholars, genealogists, students, and the general public.

Collection highlights include: a matchbox signed by President Jimmy Carter, used to light the first National Menorah in 1977; nearly 80 years of archival material from the Jewish Community Relations Council of Greater Washington (formerly the Jewish Community Council); a scrapbook featuring photos and clippings from Drug Fair stores in the 1950s and 1960s; photographs of Giant Food employees; the “Bagelman” sign from the recently closed Bethesda Bagels in Dupont Circle; a traffic cone directing carpools for a Jewish day school during the COVID-19 pandemic; and photographs from Nice Jewish Boys, a group for gay, bisexual and queer Jewish young men in DC.

Featured in the inaugural exhibitions will be a wide range of personal and political items: a broadside encouraging people to enter themselves in the 1920 Census—in Yiddish; restrictive covenants for suburban neighborhoods in the 1930s; a notebook with handwritten comments the Supreme Court’s first Jewish justice Louis D. Brandeis, a fabric pennant carried at the 1963 March on Washington, political buttons representing all sorts of political views, and a guitar used for song leading at the 2-decade long vigil for Soviet Jewry at the Soviet embassy in DC.

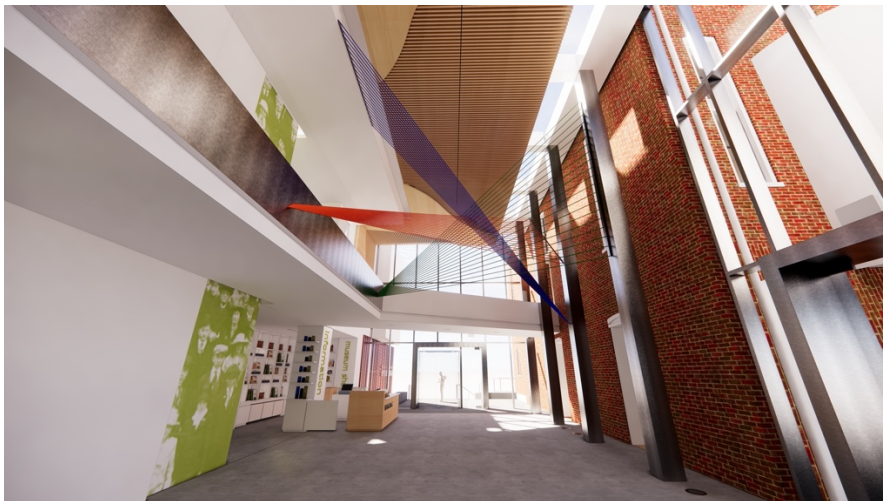
The orientation exhibit *What is Jewish Washington?* serves as an introduction to the diverse Jewish communities of DC and the suburbs. The chronological history gallery features photographs, objects, maps, oral history quotations and more to introduce the stories of Jewish Washington and how the communities have changed over time. A large interactive model in the center of the exhibit introduces visitors to the history of the historic synagogue, with doors that open, windows to peek through, and more.

Upstairs in the historic sanctuary is a transformational film scape bringing visitors back to the late-19th century. Exploring the founding of the city’s first congregations—Washington Hebrew and Adas Israel, the latter being the first occupant of the Museum’s brick building—the film transports visitors with evocative sound, silhouetted images, and historical maps and documents. Also in the gallery will be a mid-19th century Torah used by the congregation in this building.

The inaugural main exhibition, *Connect. Reflect. Act.* takes over the 2nd floor of the new building with dramatic color, interactive features, and a plethora of historical and contemporary photography. In this gallery, one highlight is a giant interactive map table. Visitors can visualize the growth and movement of the Jewish community over the decades, and also look up Jewish-owned businesses, synagogues, and organizations to locate them on the oversized map. Sitting in community at a multi-media Seder table creates a space for responding to and discussing challenging questions about immigration and justice while watching film presentations of stories of Jewish Washingtonians engaging in the practice of liberation in their own time.



The historic synagogue building (1876), adapted to its changing neighborhood by serving as home to several churches and retail businesses. Local community members saved the synagogue from demolition in the late 1960s, necessitating its first move, shown here. In 2016, the building was moved another 50 feet as part of the Capitol Crossing development project and finally to the corner of 3rd & F Streets, NW, in 2019, where it now serves as the cornerstone of the new Museum.



Artistic rendering by Zachary Oxman, ca. 2020. Copyright of the artist. The installation by contemporary artist Zachary Oxman greets visitors in the Museum's main atrium and Morse Lobby. The sculpture's

*dynamic, intersecting tubes embody the spirit of the Museum's mission to "Connect, Reflect, and Act."
Made possible by a gift from the Polinger Foundation.*

Notorious RBG: The Life and Times of Ruth Bader Ginsburg, opens the rotating exhibition gallery. This traveling show originated at the Skirball in LA and the Capital Jewish Museum is proud to be the exhibition's final stop of its national tour. *Notorious RBG* is open through November 30, 2023. The exhibition explores the American legal system and civil rights movements through the lens of the Justice's personal experiences and public service. Like its namesake book, the exhibition tells the parallel stories of her remarkable life and the efforts she joined to expand "We the People" to include those long left out of the Constitution's promises.

The Museum experience is not finished in the galleries. Rotating workshop experiences in the Community Action Lab will provide families and school groups with facilitated and free-form tinkering activities that enable a closer examination of primary sources related to Washington's Jewish history, Jewish holiday-related arts and activities, and themes explored in the Museum's exhibitions and projects. And for all visitors, the Community Action Lab is where inspiration can become action.

"Through many years, CJM staffers, colleagues from the former Jewish Historical Society of Greater Washington, scholars, community members, philanthropists, and architects and designers have worked to create a space that is worthy of the stories we have to tell and will engage and welcome visitors of all ages and backgrounds," says CJM Executive Director Ivy Barsky. "We are immensely proud to celebrate the region's Jewish history and culture, as well as to look history squarely in the eye. We all need to be part of repairing the world and we hope the Museum does its part to spark that reflection and action."

The Museum's public opening coincides with the historic synagogue's dedication on June 9, 1876, an event attended by President Ulysses S. Grant.

Admission to the Museum and core exhibitions is always free. The cost for special exhibitions, including *Notorious RBG: The Life and Times of Ruth Bader Ginsburg*, and programs varies. Members enjoy free admission to all exhibitions and discounts on programs.

For more information about the Capital Jewish Museum, please visit:
<https://capitaljewishmuseum.org/>.

###

Mission: The Capital Jewish Museum explores the Jewish experience in the national capital region and inspires visitors to connect, reflect, and act: connect personally and collectively, reflect on the relevance of the past to today, and act on behalf of their communities and values. Learn more: <https://capitaljewishmuseum.org/>

Capital Jewish Museum
Collection Images, April 2023



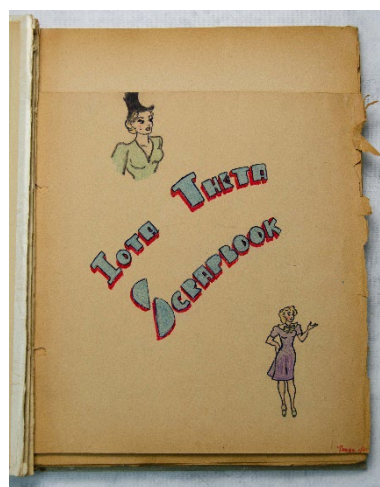
Exterior of Giant store #7 located at 3412 Connecticut Ave, NW, which opened on January 25, 1945. Capital Jewish Museum collection. Gift of the Naomi and Nehemiah Cohen Foundation.



Press badge for Judith Martin during her time as a journalist at the *Washington Post*, 1968. Badges range from 1966-1982. Capital Jewish Museum Collection. Gift of Judith Martin.



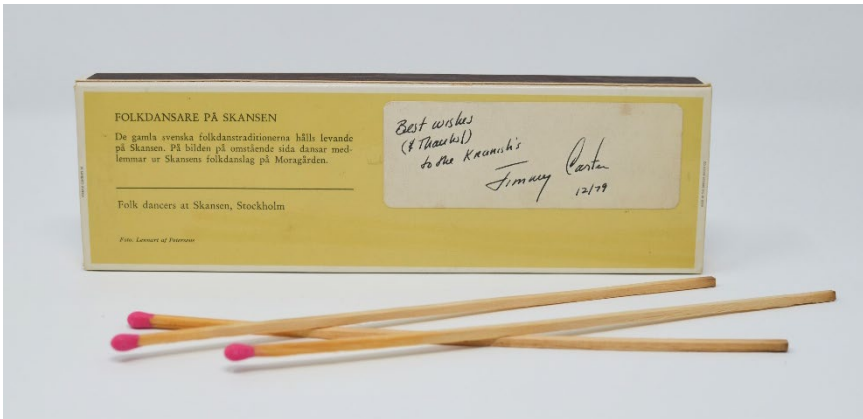
2019 Mr. Nice Jewish Boys Pageant. Capital Jewish Museum Collection. Gift of Ben Rosenbaum.



Iota Theta Scrapbook. Capital Jewish Museum Collection.



The historic 1876 Adas Israel synagogues travels along G St. NW from 6th to 3rd St. NW, December 1969. Gift of Henry Brylawski.



Matchbox, signed by President Jimmy Carter and used by the president at the White House Hanukkah event, December 17, 1979. Capital Jewish Museum Collection. Gift of Michael Kranish and family.

FOR IMMEDIATE RELEASE
May 18, 2023

Media Contact:
Steve Rabinowitz
steve@bluelightstrategies.com
c: 202-494-7655

NOTORIOUS RBG: The Life and Times of Ruth Bader Ginsburg June 9 – November 30, 2023

*Final stop of the museum retrospective of the
Supreme Court Justice–turned–cultural icon, based upon the Internet phenomenon
and bestselling book*

Washington, DC – *Notorious RBG: The Life and Times of Ruth Bader Ginsburg*, the first-ever exhibition about the late trailblazing associate justice, will run from **June 9 – November 30, 2023** at the new **Capital Jewish Museum** at the corner of **3rd and F Streets NW** in downtown Washington DC, as part of its grand opening. This traveling show originated at the Skirball Cultural Center in LA and the Capital Jewish Museum is proud to be the exhibition’s final stop of its national tour.

Based on the *New York Times* bestselling book of the same name and created in partnership with its authors, Irin Carmon and Shana Knizhnik, the exhibition takes a deeply personal journey through historic change with an entertaining yet rigorous look at the life and work of Ruth Bader Ginsburg (RBG) and the Supreme Court, on which she so famously served. It will also examine her varied roles as a student, life partner, mother, change-making lawyer, judge, women’s rights pioneer, and pop culture icon.

“The PNC team is thrilled to be the presenting sponsor for the final stop of the *Notorious RBG* exhibition in D.C. and to join with the community in celebrating the life and work of Ruth Bader Ginsburg,” says D. Jermaine Johnson, PNC regional president for Greater Washington. “The interactive experience sheds light on Justice Ginsburg’s commitment to equality and justice for all, but also portrays in stark relief her judicial prowess and savvy. Her life and story are a worthy example to us all on how to live an exemplary life dedicated to service.”

Through archival photographs and documents, historical artifacts, contemporary art, media stations, and gallery interactives, the exhibition will explore the American legal system and civil rights movements through the lens of RBG’s personal experiences and public service. Like the book, it will tell the parallel stories of her remarkable life and the efforts she joined to expand “We the People” to include those long left out of the Constitution’s promises.

“Justice Ginsburg never gave up on doing the work of equality and justice, work that is needed now more than ever,” remarked Irin Carmon, a *Washington Post* contributing writer and co-author of the *Notorious RBG* book, which has sold more than 275,000 copies since its October 2015 publication. “We’re so thrilled that the exhibition will bring to life a genuinely inspirational story, while making it clear how we all have an urgent stake in the work and future of the court.”

Co-author Shana Knizhnik – who founded the popular Tumblr that made RBG an Internet sensation – explained, “I created the Notorious RBG blog as a law student in 2013, in response to Justice Ginsburg’s forceful dissent to the Supreme Court’s 5-4 decision to strike down part of the 1965 Voting Rights Act. I hoped to pay tribute to the Justice and her remarkable story, which has only become more inspirational. I am pleased that this exhibition will illuminate, in its own way, the life and work of such a vital figure in American history.”

In keeping with Carmon and Knizhnik’s book, the exhibition will touch on the playful connection between Justice Ginsburg and the Notorious B.I.G.—both of whom were born and bred in Brooklyn, New York, as RBG herself has proudly pointed out. The title of each section riffs off a lyric by the late hip-hop artist:

- Introduction: “NOTORIOUS”
- Early Life and Education: “I GOT A STORY TO TELL”
- RBG as Activist: “STEREOTYPES OF A LADY MISUNDERSTOOD”
- Judge Ginsburg: “DON’T LET ‘EM HOLD YOU DOWN, REACH FOR THE STARS”
- Ruth and Marty: “REAL LOVE”
- Justice Ginsburg: “MY TEAM SUPREME”

Three-dimensional environments will bring key moments to life, such as recreations of Justice Ginsburg’s childhood Brooklyn apartment and of the Supreme Court bench, where visitors can take a seat and imagine making their own opinions heard. Visitors will also gain insight into RBG’s marriage to Martin “Marty” Ginsburg, her partner of more than fifty years, through family snapshots and other materials from their life together, including some of Marty’s favorite recipes as the accomplished amateur chef of the Ginsburg household. Finally, reflecting RBG’s effect on pop culture, *Notorious RBG* will include contemporary art and expression that she has inspired, by such artists as Maira Kalman, Roxana Alger Geffen, and Ari Richter. For its Washington, DC stop, the Capital Jewish Museum has added artifacts that connect to RBG’s Jewish life in the capital, including a special collar commissioned for her by *Moment Magazine*, the mezuzah from the door to her Supreme Court chambers, and artifacts collected from public memorials following her death in 2020.

The exhibition is part of the grand opening of the entire Capital Jewish Museum, the first museum in DC dedicated to the story of Jewish life in the nation’s capital region. Featuring interactive tables, film, historic photographs, and artifacts, the Museum dives deep into history while also creating space for current policy discussion with cutting-edge new technology and exhibition design.

Admission to the Capital Jewish Museum and core exhibitions is always free. The cost for special exhibitions, including *Notorious RBG: The Life and Times of Ruth Bader Ginsburg*, and programs varies. Members enjoy free admission to all exhibitions and discounts on programs.

Notorious RBG: The Life and Times of Ruth Bader Ginsburg has been coordinated at the Capital Jewish Museum by Ivy Weingram, of Independent Museum Works, and Ivy Barsky, Executive Director.

The presenting sponsor of *Notorious RBG: The Life and Times of Ruth Bader Ginsburg* at the Capital Jewish Museum is PNC. Generous support provided by Cooley, LLC; Fried, Frank, Harris, Shriver & Jacobson LLP; Stuart S. Kurlander/Latham & Watkins LLP; Levy Firestone Muse LLP; and Wiley Rein LLP. Additional support provided by Georgetown Law School; Cohen Milstein Sellers & Toll PLLC; Skadden, Arps, Slate, Meagher & Flom LLP; and Weiner Brodsky Kider PC.

About the Skirball Cultural Center

The Skirball Cultural Center is a place of meeting guided by the Jewish tradition of welcoming the stranger and inspired by the American democratic ideals of freedom and equality. The Skirball welcomes people of all communities and generations to participate in cultural experiences that celebrate discovery and hope, foster human connections, and calls upon everyone to help build a more just society.

About the Capital Jewish Museum

The new Capital Jewish Museum—opening to the public on Friday, June 9—explores the Jewish experience in the national capital region and inspires visitors to connect, reflect, and act: connect personally and collectively, reflect on the relevance of the past to today, and act on behalf of their communities and values. With its experimental spirit, the Museum connects the past to the present through thought-provoking exhibitions, dynamic programming, and creative public experiences.

For more information about the Capital Jewish Museum, please visit:

<https://capitaljewishmuseum.org/>.

###

NOTORIOUS RBG: The Life and Times of Ruth Bader Ginsburg
June 9-November 30, 2023



Notorious RBG book cover illustration by Adam Johnson. Courtesy of HarperCollins. Photographs: Crown © by Hurst Photo/Shutterstock.



Official portrait of United States Supreme Court Justice Ruth Joan Bader Ginsburg. Courtesy of WDC photos/Alamy Stock Photo.



Ruth Bader Ginsburg, by Everett Raymond Kinstler, 1996. Oil on canvas. National Portrait Gallery, Smithsonian Institution; gift of Everett Raymond Kinstler. © 1996 Everett Raymond Kinstler.



Courtroom sketch of Justice Ginsburg's dissent in *Fisher v. University of Texas*, June 24, 2013. Sketch by Art Lien.



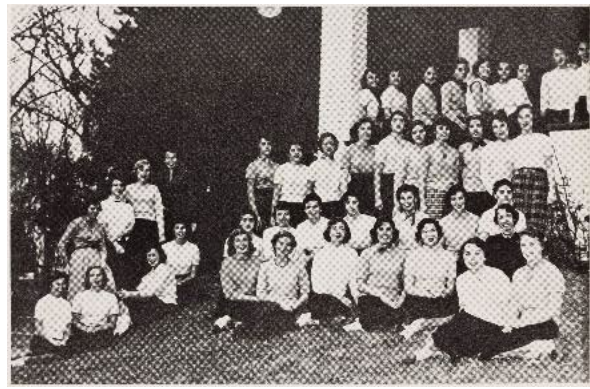
Courtroom sketch of Justice Ginsburg's dissent in *Shelby County v. Holder*, June 25, 2013. Sketch by Art Lien.



Courtroom sketch of Justice Ginsburg's dissent in *Epic Systems Corp. v. Lewis*, May 21, 2018. Sketch by Art Lien.



Ruth Bader as a child, 1935. Collection of the Supreme Court of the United States.



The Alpha Epsilon Phi sorority at Cornell University in 1953, featuring Ruth Bader, class of 1954, pictured third from right standing in front of the porch. Published in *The Cornellian*, 1953. Division of Rare and Manuscript Collections, Cornell University Library.



RBG and Marty with their daughter, Jane, 1958. Collection of the Supreme Court of the United States



RBG and Marty with their daughter, Jane, 1958. Collection of the Supreme Court of the United States



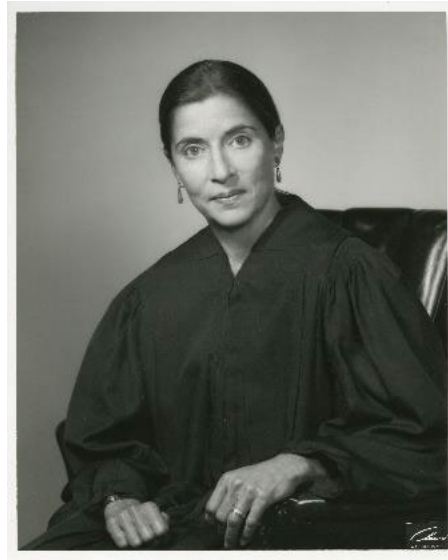
Ruth Bader Ginsburg teaching at Columbia Law School, 1972. Courtesy of Columbia Law School.



Ruth Bader Ginsburg, detail from 1972 Harvard Law School Yearbook. © Harvard Law School Yearbook Association, Courtesy of Harvard Law School Library, Historical and Special Collections.



RBG and Marty taking a break from work, 1972. Collection of the Supreme Court of the United States.



RBG as a federal appeals court judge, 1980. Collection of the Supreme Court of the United States.



RBG and Marty travel to Paris, 1988. Courtesy of Justice Ginsburg's Personal Collection.



Justice Antonin Scalia and RBG riding an elephant, 1994. Collection of the Supreme Court of the United States.



Maira Kalman, *Ruth Bader Ginsburg*, 2009. © Maira Kalman. Courtesy Julie Saul Gallery, New York.



Maria Kalman, *Ruth Bader Ginsburg Robe*, 2009. © Maira Kalman. Courtesy Julie Saul Gallery, New York.



Maira Kalman, *Ruth as a Young Girl*, 2009. © Maira Kalman. Courtesy Julie Saul Gallery, New York.



Roxana Alfer Geffen, *Self-Portrait*, 2016. Courtesy of the artist.



Roxana Alfer Geffen, *Dissent Collar #11*, 2016. Courtesy of the artist.



Roxana Alfer Geffen, *Dissent Collar #13*, 2016. Courtesy of the artist.



575 3rd Street, NW
Washington, D.C. 20001

202-789-0900

CapitalJewishMuseum.org

Notorious RBG: The Life and Times of Ruth Bader Ginsburg

Public & Family Programs

Summer/Fall 2023

CJM Community Day

The Life and Legacy of RBG

Sunday, June 25 | 11 am – 3 pm

Free | Registration Required

Join us for a day of discovery and action inspired by the life and legacy of Ruth Bader Ginsburg — featuring story time, book signings, crafts, and spotlight talks. Explore the exhibitions with a scavenger hunt; make your own graphic novel; get up-close with artifacts from CJM's collection, and much more. This dynamic day has something for everyone! Registration includes access to *Notorious RBG: The Life and Times of Ruth Bader Ginsburg*.

11:30 am | **Story Time with Debbie Levy, *I Dissent: Ruth Bader Ginsburg Makes Her Mark***

12:15 pm | **Make Your Own Graphic Novel Workshop led by Debbie Levy and Erica Perl** – inspired by Levy's graphic novel, *Becoming RBG: Ruth Bader Ginsburg's Journey to Justice*

1:15 pm | **Book Signing with Debbie Levy and Erica Perl**

1:30 pm | **Story Time with Nadine Epstein, *RBG's Brave & Brilliant Women: 33 Jewish Women to Inspire Everyone***

2:15 pm | **Book Signing with Nadine Epstein**

11 am – 3 pm | **Drop-in Crafts**

11:00 am – 2:30 pm | **Meet the Collection**

11:30 pm, 12:30 pm, 1:30 pm, 2:30 pm | **Spotlight Talks: Notorious RBG**

Salon Nights

I Dissent Collar Making

Wednesday, July 12 | 5:30 – 8 pm

\$25 Members | \$30 General

Artist **Roxana Alger Geffen** leads a creative evening of craftivism, conversation, and civic engagement. This Salon Night includes everything you need to make your own RBG-inspired dissent collar. Start the evening with an artist talk with Geffen as she discusses her *Dissent Collars Series* and her work, then join her in *Notorious RBG: The Life and Times of Ruth Bader Ginsburg*, where she will highlight two of her collars featured in the exhibit. Next, Geffen will demonstrate the process of creating a dissent collar, then put your learning to work and craft your own! Tickets include all supplies, admission to *Notorious RBG: The Life and Times of Ruth Bader Ginsburg*, and 1 drink. Additional refreshments will be available to purchase. *No artistic experience needed. Ages 21+. Space is limited.*

5:30 pm | **Artist Talk**

5:45 pm | **Spotlight Talk: Notorious RBG**

6pm | **Dissent Collar Demonstration**

6:15pm | **Make your own Dissent Collar**

Family Programs

Story Time at CJM

Thursday, August 10 | 10 – 11 am

Free | Registration Required

Playing is learning! Join us the second Thursday of this month for *Story Time at CJM* inspired by Justice Ruth Bader Ginsburg, presented in partnership with **PJ Library**. Children and their caregivers are invited for stories, songs, and exploratory play as a means of reinforcing early literacy skills. Each month features a different theme and book suited for children of all backgrounds as they learn about themselves and the world around them. *Most appreciated by kids aged 5 and under.*

CJM Block Party

Sunday, September 10 | 11 am – 5 pm

Free | Registration Required

Ring in the Jewish New Year and the start the fall holidays with our community block party – featuring live music, crafts, holiday activities, social justice workshops, food for purchase, and more.

FALL PROGRAM TICKETS

Members' Early Access: July 1

General Access: July 15

The RBG Workout

Thursday, September 28 | 6:30 – 8 pm

\$20

Plank like RBG! Work out with RBG's personal trainer, **Bryant Johnson**, while being entertained with memories of his time with the late Justice. Following the program Johnson will sign copies of his book, *The RBG Workout: How She Stays Strong . . . and You Can Too! Space is limited. BYO yoga mat.*

The Post RBG Court: A Panel Conversation

Tuesday, October 3 | 6:30– 8 pm

\$15 Members | \$18 General


In conjunction with *Notorious RBG: The Life and Times of Ruth Bader Ginsburg*, join distinguished panelists for a timely discussion about the current state of the Supreme Court. Panelists will discuss cases on the docket and what to expect from the Court in the coming year. Panelists include **Jeffrey Rosen**, President and CEO of the National Constitution Center, **Dahlia Lithwick**, Canadian American lawyer, writer, and journalist, and **Roman Martinez**, the Deputy Office Managing Partner at Latham & Watkins Washington, DC office and a member

of the firm's Supreme Court & Appellate Practice.

CJM After Sunset

The Notorious RBG

Thursday, October 19 | 6 – 9 pm

\$25 Member | \$30 General | \$36 Chai  Ticket


Discover *Notorious RBG: The Life and Times of Ruth Bader Ginsburg* after hours. Dig deeper into exhibit stories with Spotlight Talks, delve into current social justice issues inspired by RBG's legacy, build action tools in our Community Action Lab, and craft your own dissent notebook, while indulging in nosh and drinks. All museum exhibits and public spaces are open for exploration during this lively and dynamic event.

Ages 21+. Ticket includes two drinks. Additional drinks available for purchase.

Nights at the Round Table

A Conversation about Reproductive Rights

Thursday, November 2 | 6:30 – 9 pm

\$45 General | \$54 Chai  Ticket

Join us for a timely discussion about reproductive rights over a shared meal. Expert panelists will discuss the current crisis, share goals and approaches of local and national groups, and suggest meaningful responses. Facilitated conversations and action steps follow. Panelists include **Sheila Katz**, CEO of National Council of Jewish Women, **Senator Ariana Kelly** who represents District 16 in the Maryland Senate, and moderator **Renee Bracey Sherman**, founder and executive director of We Testify.

Program Support

PNC is the presenting sponsor of the *Notorious RBG: The Life and Times of Ruth Bader Ginsburg* exhibition and related programs at the Capital Jewish Museum. Support for Community Day, Salon Nights, and CJM After Sunset is provided in part by HumanitiesDC.

About the Capital Jewish Museum

The Lillian and Albert Small Capital Jewish Museum explores the Jewish experience in the national capital region, inspiring visitors to connect, reflect, and act — connect personally and collectively, reflect on the relevance of the past to today, and act on behalf of their values and communities. The new Museum will open on June 9, 2023, with thought-provoking exhibitions, lively programming, and creative public experiences. Learn more about the Museum at capitaljewishmuseum.org.

###

For additional information about the Capital Jewish Museum, please contact:

Maura Scanlon, Communications Specialist

mscanlon@capitaljewishmuseum.org | 202-735-3522

Collection Overview

The Lillian and Albert Capital Jewish Museum's collection is composed of historic artifacts, personal and family papers, as well as archival documents and photographs that provides a rich, multifaceted glimpse into Jewish life in Washington DC, suburban Maryland, and Northern Virginia from the 1850s to the present day. It is a collection which reflects a history that is at once local, national, and international. The collection-- a valuable tool for researchers and a strong foundation for the Museum's exhibitions-- includes more than 24,000 digital and print photographs, 1,050 objects, and 800 linear feet of archival materials, including personal papers and business and organizational records.

A highlight of the collection, the Museum has more than 90 scrapbooks from individuals, families, clubs, organizations, institutions, and Jewish-owned businesses, spanning nearly a century of Jewish history in the greater Washington area. One such example, the collection of Drug Fair scrapbooks span the 1950s and 1960s and includes clippings and photographs from most opening events for the Virginia-based retail chain. Similarly, the Museum has a strong collection of signs and ephemera representing Jewish-owned and operated business, included the vast and detailed collection of local grocery retailer, Giant Food, from the company's founding in the Depression through the 1980s, all while managed by the Cohen family. Another strength are objects related to lawmakers and lobbyists, from photographs and personal documents of disability rights activist and federal employee, Judith Heumann; to a mezuzah in Congressman Jamie Raskin's Capitol Hill office; and a corkscrew, distributed by the National Council of Jewish Women to elected officials, that reads "Screw the patriarchy." Also of note are the collection of materials from protests, rallies, and vigils, including the sign (and corresponding photograph) "This is the Moment I Trained for in Hebrew School" from a rally against a Muslim travel ban; tribute messages and drawings on post-it notes from mourners attending a vigil for Ruth Bader Ginsburg at the Supreme Court; and political buttons advocating for AIDS research and support for the LGBTQ community.

Recent acquisitions include 19th-century hand-carved bimah chairs from the sanctuary of one of DC's first synagogues, the seder plate and haggadah used by the Obama family and staff in the White House, nearly 80 years of institutional archival material from the Jewish Community Relations Council of Greater Washington (formerly the Jewish Community Council), the iconic "Bagelman" business sign from Bethesda Bagel's former location in Dupont Circle, and several family collections.

Conservation of key items for the Museum's core exhibitions include a 1968 model of the historic Adas Israel synagogue; a neon sign from a local business reading "If it's Jewish We have it!"; a large window from the Hebrew Home for the Aged depicting the Star of David (ca. 1951); a fabric pennant carried by Hyman Bookbinder at the 1963 March on Washington; and the 1898 *ner tamid* (eternal light) from Washington Hebrew Congregation's Eight Street temple, now installed in the Museum's historic sanctuary.

The collection is accessible by appointment to scholars, genealogists, students, and other researchers.



To date, the Museum has digitized nearly 1,000 unique items from our collection, and more than 1,800 additional catalog records are now viewable in our online collections search. With the addition of advanced scanners, dozens of unscanned film negatives were recently processed and seen for the first time in nearly half a century. Ongoing efforts to digitize the collection and add image descriptions to catalog records will continue, with a significant effort taking place in 2023 as the Museum works to put expanded catalog records online.

Generous support to preserve the Capital Jewish Museum's collection is provided by the Stuart and Martha Bindeman Charitable Trust; Lynn and John Sachs and Susan Sachs Goldman; the Isadore and Bertha Gudelsky Foundation; Wilma Probst Levy and Louis Levy; Edith Chidakel Pascal and Charles M. Pascal; and Jeffrey and Christie-Anne Weiss.

About the Capital Jewish Museum

The Lillian and Albert Small Capital Jewish Museum explores the Jewish experience in the national capital region, inspiring visitors to connect, reflect, and act — connect personally and collectively, reflect on the relevance of the past to today, and act on behalf of their values and communities. The new Museum will open on June 9, 2023, with thought-provoking exhibitions, lively programming, and creative public experiences. Learn more about the Museum at capitaljewishmuseum.org.

###

For additional information about the Capital Jewish Museum, please contact:

Maura Scanlon, Communications Specialist
mscanlon@capitaljewishmuseum.org | 202-735-3522





575 3rd Street, NW
Washington, D.C. 20001

202-789-0900

CapitalJewishMuseum.org

Public & Family Programs Summer/Fall 2023

Erev Opening Bash

Thursday, June 8 | 6 – 9 pm

\$54 General | \$108 *Chai* ❤️ CJM*

It's time to celebrate! In keeping with the tradition of Jewish holidays beginning at sundown, the Capital Jewish Museum kicks off our grand opening with an Erev Opening Bash on June 8th!

Enjoy a memorable evening of celebration and discovery! Be among the first to explore the new Museum, enjoy food and drinks reimagined from our historic cookbooks, get up close with artifacts, meet the minds behind the Museum, enjoy activities inspired by our collection, and much more. This experience only happens once and is not to be missed.

Advance ticket purchase required. Space is limited. Ages 21+. Cocktail attire suggested.

**Chai*, “life” in Hebrew, corresponds to—and inspires donations in multiples of—the number 18. Select this price to further support the Museum.

CJM Community Day

The Life and Legacy of RBG

Sunday, June 25 | 11 am – 3 pm

Free | Registration Required

Join us for a day of discovery and action inspired by the life and legacy of Ruth Bader Ginsburg — featuring story time, book signings, crafts, and spotlight talks. Explore the exhibitions with a scavenger hunt; make your own graphic novel; get up-close with artifacts from CJM's collection, and much more. This dynamic day has something for everyone! Registration includes access to *Notorious RBG: The Life and Times of Ruth Bader Ginsburg*.

11:30 am | **Story Time with Debbie Levy, *I Dissent: Ruth Bader Ginsburg Makes Her Mark***

12:15 pm | **Make Your Own Graphic Novel Workshop led by Debbie Levy and Erica Perl** – inspired by Levy's graphic novel, *Becoming RBG: Ruth Bader Ginsburg's Journey to Justice*

1:15 pm | **Book Signing with Debbie Levy and Erica Perl**

1:30 pm | **Story Time with Nadine Epstein, *RBG's Brave & Brilliant Women: 33 Jewish Women to Inspire Everyone***

2:15 pm | **Book Signing with Nadine Epstein**

11 am – 3 pm | **Drop-in Crafts**

11:00 am – 2:30 pm | **Meet the Collection**

11:30 pm, 12:30 pm, 1:30 pm, 2:30 pm | **Spotlight Talks: Notorious RBG**

Salon Nights

I Dissent Collar Making

Wednesday, July 12 | 5:30 – 8 pm

\$25 Members | \$30 General

Artist **Roxana Alger Geffen** leads a creative evening of craftivism, conversation, and civic engagement. This Salon Night includes everything you need to make your own RBG-inspired dissent collar. Start the evening with an artist talk with Geffen as she discusses her *Dissent Collars Series* and her work, then join her in *Notorious RBG: The Life and Times of Ruth Bader Ginsburg*, where she will highlight two of her collars featured in the exhibit. Next, Geffen will demonstrate the process of creating a dissent collar, then put your learning to work and craft your own! Tickets include all supplies, admission to *Notorious RBG: The Life and Times of Ruth Bader Ginsburg*, and 1 drink. Additional refreshments will be available to purchase. *No artistic experience needed. Ages 21+. Space is limited.*

5:30 pm | **Artist Talk**

5:45 pm | **Spotlight Talk: Notorious RBG**

6pm | **Dissent Collar Demonstration**

6:15pm | **Make your own Dissent Collar**

CJM Block Party

Sunday, September 10 | 11 am – 5 pm

Free | Registration Required

Ring in the Jewish New Year and the start the fall holidays with our community block party – featuring live music, crafts, holiday activities, social justice workshops, food for purchase, and more.

FALL PROGRAM TICKETS

Members' Early Access: July 1

General Access: July 15

The RBG Workout

Thursday, September 28 | 6:30 – 8 pm

\$20

Plank like RBG! Work out with RBG's personal trainer, **Bryant Johnson**, while being entertained with memories of his time with the late Justice. Following the program Johnson will sign copies of his book, *The RBG Workout: How She Stays Strong . . . and You Can Too!* *Space is limited. BYO yoga mat.*

The Post RBG Court: A Panel Conversation

Tuesday, October 3 | 6:30– 8 pm


\$15 Members | \$18 General

In conjunction with *Notorious RBG: The Life and Times of Ruth Bader Ginsburg*, join distinguished panelists for a timely discussion about the current state of the Supreme Court. Panelists will discuss cases on the docket and what to expect from the Court in the coming year. Panelists include **Jeffrey Rosen**, President and CEO of the National Constitution Center, **Dahlia Lithwick**, Canadian American lawyer, writer, and journalist, and **Roman Martinez**, the Deputy Office Managing Partner at Latham & Watkins Washington, DC office and a member of the firm's Supreme Court & Appellate Practice.

CJM After Sunset

The Notorious RBG

Thursday, October 19 | 6 – 9 pm

\$25 Member | \$30 General | \$36 Chai  Ticket


Discover *Notorious RBG: The Life and Times of Ruth Bader Ginsburg* after hours. Dig deeper into exhibit stories with Spotlight Talks, delve into current social justice issues inspired by RBG's legacy, build action tools in our Community Action Lab, and craft your own dissent notebook, while indulging in nosh and drinks. All museum exhibits and public spaces are open for exploration during this lively and dynamic event.

Ages 21+. Ticket includes two drinks. Additional drinks available for purchase.

Nights at the Round Table

A Conversation about Reproductive Rights

Thursday, November 2 | 6:30 – 9 pm

\$45 General | \$54 Chai  Ticket

Join us for a timely discussion about reproductive rights over a shared meal. Expert panelists will discuss the current crisis, share goals and approaches of local and national groups, and suggest meaningful responses. Facilitated conversations and action steps follow. Panelists include **Sheila Katz**, CEO of National Council of Jewish Women, **Senator Ariana Kelly** who represents District 16 in the Maryland Senate, and moderator **Renee Bracey Sherman**, founder and executive director of We Testify.

A Very CJM 25th of December

Monday, December 25 | 11 am – 4 pm

CJM is pleased to provide special programming on December 25—details coming soon.



Family Programs

Story Time at CJM

Second Thursdays, 10 – 11 am

July 13; August 10*; September 14; October 12; November 9; December 14

Free | Registration Required

Playing is learning! Join us the second Thursday of each month for *Story Time at CJM*, presented in partnership with **PJ Library**. Children and their caregivers are invited for stories, songs, and exploratory play as a means of reinforcing early literacy skills. Each month features a different theme and book suited for children of all backgrounds as they learn about themselves and the world around them. *Most appreciated by kids aged 5 and under.* *August 10: Justice Ruth Bader Ginsburg

Program Support

PNC is the presenting sponsor of the *Notorious RBG: The Life and Times of Ruth Bader Ginsburg* exhibition and related programs at the Capital Jewish Museum. Support for Community Day, Salon Nights, and CJM After Sunset is provided in part by HumanitiesDC.

About the Capital Jewish Museum

The Lillian and Albert Small Capital Jewish Museum explores the Jewish experience in the national capital region, inspiring visitors to connect, reflect, and act — connect personally and collectively, reflect on the relevance of the past to today, and act on behalf of their values and communities. The new Museum will open on June 9, 2023, with thought-provoking exhibitions, lively programming, and creative public experiences. Learn more about the Museum at capitaljewishmuseum.org.

###

For additional information about the Capital Jewish Museum, please contact:

Maura Scanlon, Communications Specialist
mscanlon@capitaljewishmuseum.org | 202-735-3522





575 3rd Street, NW
Washington, D.C. 20001

202-789-0900

CapitalJewishMuseum.org

LEADERSHIP TEAM

IVY L. BARSKY, EXECUTIVE DIRECTOR

Ivy L. Barsky, Executive Director, has more than 30 years of museum leadership and experience in shepherding museum construction and major exhibition projects. Under her guidance, the Capital Jewish Museum has developed and installed the core exhibitions *What is Jewish Washington?* and *Connect. Reflect. Act.*, launched a new membership program, and will soon complete construction of the new museum.

She served for eight years as CEO of the National Museum of American Jewish History in Philadelphia, PA. Under her leadership, the organization raised \$45 million, welcomed hundreds of thousands of visitors, garnered press attention and national funding for significant exhibitions, and developed a reputation for programmatic vibrancy and “buzz” through a robust education program and scores of groundbreaking public programs. Barsky also served for 15 years at the Museum of Jewish Heritage—A Living Memorial to the Holocaust in New York City, first as founding director of the Education Department, helping to shape the content of the core exhibition, then as Deputy Director, instrumental in the building and opening of an 82,000-square foot addition, the first new construction in lower Manhattan after September 11.

Prior to joining the Capital Jewish Museum, Barsky consulted for a variety of nonprofits in New York and Philadelphia, including New York City Opera and the Fellowships at Auschwitz for the Study of Professional Ethics (FASPE).

Barsky has a B.A. from New York University and an M.A. in the history of art from the University of Pennsylvania. She is an arts and culture hound, avid reader, and music fan. She always aims to make a dent in the universe.

ESTHER SAFRAN FOER, PRESIDENT

Esther Safran Foer was elected President of the Board of Directors in the Fall of 2022, having previously served on the Board’s Executive Committee. Foer was previously the Executive Director and CEO of Sixth & I for ten years, where she led the creation of what the national media called “a new paradigm for Jewish life.” In 2008 she was recognized as one of the *Forward’s* “Forward 50” Jewish leaders in the country. In 2015 she was named one of the most powerful women in Washington by *Washingtonian Magazine*.

Prior to being recruited to Sixth & I by its founders, Foer spent most of her professional life in all aspects of the public relations profession, eventually running her own firm representing Fortune 500 companies. She was involved in politics as a state press secretary and state director for a major presidential campaign. She currently serves on the Advisory Board of *Moment Magazine* and the Board of Americans for Ben Gurion University.

Foer is the daughter of Holocaust survivors, the wife of Bert Foer (an attorney and public interest advocate), the mother of three sons (bestselling authors Frank, Jonathan,

and Joshua Foer), and the grandmother of seven. She is a strong proponent for each of us, as individuals and communities, to tell our stories as lessons and inspirations for future generations.

Her post Holocaust memoir, *I Want You to Know We're Still Here* (Penguin Random House, 2020) was a National Jewish Book Award finalist, a BBC Radio “book of the week,” and named one of the best books of the year by NPR and the Religion News Service. Foer has presented the book internationally, across four continents, and seen it published in 9 languages.





575 3rd Street, NW
Washington, D.C. 20001
202-789-0900
CapitalJewishMuseum.org

CURATORIAL TEAM

SARAH A. LEAVITT, PH.D., CURATOR

Sarah A. Leavitt (she/her) has worked in the museum field for more than 3 decades, at locations ranging from a small historical society in Connecticut, a university history museum in Colorado, a historic cotton spinning mill in Rhode Island, and the biomedical history museum at the National Institutes of Health. She is the author of several books and articles, including a monograph called *From Catharine Beecher to Martha Stewart: A Cultural History of Domestic Advice* (UNC Press, 2002), as well as local history books about Slater Mill Historic Site and St. Elizabeths mental health hospital in Washington, DC. Her published articles cover topics ranging from the history of online motherhood groups to father-daughter relationships on the TV show *Veronica Mars* to the history of the pregnancy test kit (also a web exhibit).

Leavitt came to the Capital Jewish Museum most recently from the National Building Museum (NBM), where she was curator for 13 years and worked on exhibitions about the history of the parking garage, the story of the low-income renter eviction crisis, and the border wall between the US and Mexico).

Professional service to the field has included a term on the National Park Service's National Historic Landmarks Committee. She serves as the Event Review Editor for *American Quarterly* and is on the Rosen Prize Committee of the American Association of the History of Medicine—a prize that Leavitt herself received in 2019 for her exhibition about St. Elizabeths. She was also the recipient of the Wisconsin Historical Society Book Award (2013) for an edited volume about Frank Lloyd Wright's apprenticeship program at Taliesin in the 1940s.

Leavitt graduated *magna cum laude* with a BA in American Studies from Wesleyan University and holds a PhD in American Civilization from Brown University. She hails originally from Wisconsin, where she was both a camper and a counselor at Jewish summer camps, and has lived for more than twenty years in Silver Spring, Maryland, where she belongs to Temple Shalom.

ERIC S. YELLIN, PH.D., VISITING CURATOR & UNIV. of RICHMOND HISTORY PROFESSOR

Eric S. Yellin (he/him) is an historian of the United States with emphasis on twentieth-century American politics, race and ethnicity, and the histories of Washington, DC, and the federal government. He is an award-winning teacher and Associate Professor of History at the University of Richmond in Richmond, Virginia. Yellin began his work with the Capital Jewish Museum in 2015.

Yellin's first book, *Racism in the Nation's Service: Government Workers and the Color Line in Woodrow Wilson's America* (University of North Carolina Press 2013), examines federal employment as a lever and obstacle for racial equality and social mobility in the

age of progressive politics. Spanning the period from Reconstruction to the 1920s, *Racism in the Nation's Service* reveals how racial discrimination in federal offices during the presidency of Woodrow Wilson implicated the United States government in the economic limitation of African Americans.

Yellin is also co-editor, with Dr. Frederick W. Gooding Jr., of *Public Workers in Service of America: A Reader* (University of Illinois Press 2023). The book brings together research from leading historians of public-sector labor to establish a state of the field and chart new directions for research on this crucial group of American workers.

Yellin graduated *magna cum laude* from Columbia University and holds a PhD in History from Princeton University. His public history work can be seen in news outlets, such as *USA Today*, *The Washington Post*, *The Conversation*, and elsewhere. In addition to his work with the Capital Jewish Museum, Yellin serves as an advisor to the new permanent exhibition project at the Woodrow Wilson Presidential Library and Museum in Staunton, Virginia. He lives in Richmond, where he is a member of Congregation Beth Ahabah, one of the oldest Jewish congregations in the United States.

JONATHAN EDLEMAN, COLLECTIONS CURATOR

Jonathan Edelman (he/him) serves as the Collections Curator at the Capital Jewish Museum. In this role, Edelman oversees the museum's collection, acquires new archival collections, and worked closely with the curatorial team developing the core exhibitions for the new museum. He came to the Museum after completing a master's in museum studies at The George Washington University and working for two years in the Film, Oral History, & Recorded Sound division of the U.S. Holocaust Memorial Museum.

A native of Kansas City, Edelman has called the District home for the past seven years, including as a member of Adas Israel Congregation and serving on the board of the Edlavitch DC JCC.



SMITHGROUP

LILLIAN AND ALBERT SMALL CAPITAL JEWISH MUSEUM MUSEUM DESIGN

PROJECT FACTS

- Size: 32,000 sf in total (4,000 sf synagogue structure + 28,000 sf new structure)
- Levels: 4 (new structure), 2 (synagogue)
- Completion: June 2023
- LEED: Silver certification pending

PROJECT TEAM

- SmithGroup - Architecture, Fire Protection and Life Safety Engineering, Historic Preservation, Lighting Design, MEP Engineering
- Consigli Construction - General Contractor
- Regan Associates, LLC - Project Manager
- Wiles Mensch - Civil Engineering
- Tadjer Cohen Edelson - Structural Engineering
- Lee & Associates - Landscape Architecture
- Saunders & Associates - Acoustics
- Phase Shift Consulting, LLC - A/V and Telecom
- Cumming - Cost Estimating
- Goulston & Storrs - Legal

PROJECT GOALS & DESIGN DRIVERS

- In 2006, Property Group Partners introduced a plan to create a new mixed-use district in Washington, DC's core, Capitol Crossing. That plan would enclose the 395/3rd Street Tunnel to recreate 2nd Street NW and create 2.2 million sf in pedestrian-friendly commercial office, retail, and residential.
 - The historic Adas Israel Synagogue stood at 3rd and G Streets NW at that time, within the boundaries of the new development.
 - Developer offered the Jewish Historical Society of Greater Washington a new site for the synagogue within the development, at 3rd and the newly reconnected F Street NW, on which to move the historic synagogue and build out a larger museum to expand its purpose and programming.
- The Museum's mission is to serve as an educational facility to explore the Jewish experience in the national capital region.
- The design goal of the project is connecting old and new in support of the Museum's mission to inspire visitors to connect, reflect and act. The design both celebrates and protects the Museum's largest artifact, the historic 1876 Adas Israel synagogue.

THIRD & F STREETS NW SITE

- The new Museum is an anchor in its new location, helping to further reactivate the local neighborhood that has been stitched back together by the Capitol Crossing development.
- The historic synagogue structure is elevated on a plinth at the corner of 3rd and F Streets NW abutting the property line. A new L-shaped structure cradles the synagogue creating a fluid transition to step up to the future mixed-use development to the east and the existing taller office buildings on the south and west of the site. This design solution prevents the synagogue from being dwarfed by the surrounding newer construction.

SMITHGROUP

- The plinth also mitigates the height and significant impact of the underground garage entrance, situating the museum a few feet above sidewalk level.
- The plinth signals that this is not the historic site of the synagogue structure, which would have been a level sidewalk in the Synagogue's original location.
- The site provided in the new Capitol Crossing development has an existing 3-block underground garage. The design of the new museum navigates both the three-lane street-level garage entrance as well as the predetermined elevator and exit stair locations to the garage.
 - SmithGroup's engineers worked closely with the engineers for the garage, to coordinate how the museum's building systems and structure could tie into the parking structure below, work that took place before the museum building could begin design.

THE VISITOR JOURNEY

- Visitors enter the museum through two 'street-level' visitor entrances leading into the public lobby—the main visitor entrance from 3rd Street, NW and a secondary ADA-accessible entrance from F Street, NW.
 - The double-height lobby features an abstraction of the city plan of Washington, DC represented in an oak wood panel ceiling. The backlit solid expanse depicts the Potomac and Anacostia Rivers, with slats behind representing land mass.
 - A skylight runs the length of the lobby from the 3rd Street entrance along the south face of the historic synagogue that is enclosed within the new building, providing a light-filled connection between old and new. The skylight continues vertically as a full height window in the Community Action Lab space on the third floor.
- Visitors are intended to progress from the lobby for ticketing into the orientation gallery inside the synagogue on the same floor. Visitors then travel up the synagogue's stairs to its second-floor gallery, originally its worship space, then continuing on to the other second-floor galleries of the new museum via a gently inclined bridge.
 - The bridge contends with the difference in floor heights between the historic synagogue structure and the new museum structure. It serves as a symbol of the connection between the past and present and physical connection of historic structure to new construction.
- A single-height multipurpose space at the rear of the lobby can be open for casual seating and event rentals. A sliding partition enables it to be closed completely for more formal programming.
- The lobby features a tricolor art installation by Zack Oxman, commissioned by the Capital Jewish Museum.

DESIGN DETAILS & MATERIALITY

- Materiality of the museum reinforces the goal of connecting old and new together in the design. The modern addition reflects the simplicity of the materials of the historic synagogue structure—brick, glass, wood and metal—mirroring them with modern counterparts in the new addition.
- The exterior of the new addition is wrapped with terracotta panels and terracotta baguette screen in a pattern of cream, red, and two shades of gray. The patterning of the terracotta provides scale, texture, and articulation to relate the new museum to the modest brick façade of the historic synagogue and is a play on the varying vintages of brick on its exterior.
- A red ribbon composed of terracotta panels begins at the museum's main entrance and continues as aluminum panels around the garage entrance, up the museum's south face, capping the new addition and cascading across the roof terrace and down the north face of the building. The red of the ribbon recalls the red brick of the historic synagogue, visually uniting old and new.

SMITHGROUP

- Linear patterning creates a unified design language for the museum. First found in the orientation of the terracotta façade, then repeated in the wood slat ceiling of the lobby and first level gallery in the synagogue, and again in carpet patterns of the museum offices and temporary gallery on the third floor, as well as bench seating throughout the museum and the wall coverings in restrooms.
- The linear pattern of the terracotta façade later informed the museum's brand identity.
- The lobby, bridge, public corridors and elevator lobbies feature polished concrete floors. The smooth monolithic surface of the concrete floors contrast with the finer scale of the brick fabric of the synagogue and the textured rhythm of the wood paneling on the ceiling, creating harmony in the lobby space.
- On the third floor, a roof terrace features lush plantings, a pergola, and outdoor furniture with sweeping views of the National Building Museum to the west, Union Station to the east, and the Capitol to the southeast.
 - Climbing hydrangeas will scale the pergola enclosing the east side and creating a 'roof' for the terrace and a shady greenspace for museum staff or exclusive events.
 - An adjacent green roof on the third floor planted with sedum varieties is visible from the elevator lobby.

BACK OF HOUSE & BUILDING SYSTEMS

- Exhibit galleries on both the second and third floors are designed with 19-foot floor-to-floor heights to accommodate a diversity of exhibit arrangements.
 - Placement of power, AV/IT, and lighting were coordinated with the exhibit designers in the second-floor permanent galleries.
 - The third-floor temporary gallery features a standard grid layout of power, AV/IT, and lighting to provide greater flexibility to accommodate special exhibitions.
- A light-filled modern office space for Museum staff on the fourth floor features a mix of open desks and private offices, flexible work furniture, a conference room, and galley kitchen. Bright blue accents are paired with faux sycamore paneling to carry the museum's materiality into the workspace.
- An archival processing room, also on the fourth floor, enables on-site collections storage and swing space for transitioning exhibitions in the temporary gallery on the third floor. Within the archival room, a separate collections backroom is served by a dedicated conditioning system to enable on-site processing of delicate artifacts.
- Sophisticated HVAC systems balance differing humidification needs throughout the new museum. Gallery and collections handling spaces in the new addition require wintertime humidification to protect artifacts. However, to protect the historic synagogue, where humidification could lead to condensation and deterioration of the historic envelope, building systems remove humidification.
- To meet energy efficiency requirements, the building is submetered to enable the museum to understand how energy is being consumed space by space at a granular level.

SMITHGROUP

LILLIAN AND ALBERT SMALL CAPITAL JEWISH MUSEUM HISTORIC ADAS ISRAEL SYNAGOGUE

PROJECT TEAM

- SmithGroup – Responsible for Architecture, Fire Protection and Life Safety Engineering, Historic Preservation, Lighting Design, MEP Engineering for incorporation of the historic structure into the new museum facility.
- Beyer Blinder Belle – Responsible for Historic Preservation planning to enable the relocation of the historic structure to the new site of the museum facility.

BASIC INFORMATION

- Listed on the District of Columbia Inventory of Historic Sites in 1968 and the National Register of Historic Site in 1969, the 4,000 sf synagogue structure is a notable example of the city's early vernacular religious architecture.
- A two-story common-bond red brick structure, it features a gable roof, cantilevered wooden apse, cylindrical cupola and tall unevenly spaced windows with fan-shaped, wood 'lunette' transom details.
- A marble lunette above the main doors to the second-floor sanctuary was removed for the most recent relocation, has been restored by Worchester Eisenbrandt, Inc. and is part of the orientation gallery's *What is Jewish Washington?* exhibit on the first level of the synagogue.
 - SmithGroup digitally scanned the original to enable creation of a replica of this lunette to be reinstalled on the building's exterior.
 - "Adas Israel Congregation" is inscribed in Hebrew and "Erected 5636" is inscribed below in English.
- The ground floor of the synagogue structure originally contained classrooms, an office, and weekday chapel, with shorter windows than the level above.
- The upper floor contained the formal sanctuary, including the separate gallery for women, which remains.
 - The Ark of the Law was located on the eastern end of the space surrounded by classical pediment with Victorian side braces.
 - The platform and steps to the Bimah remain, and were originally surrounded by a reading desk, railing, and a semi-circle of chairs, which were lost over time. The railing has been recreated.
 - The brass eternal light, *ner tamid*, from 1898 is a renovated and restored lamp from the original Washington Hebrew Congregation and has been retrofitted from a gas to electric light source.
 - Above the Ark is a small blue glass window which has been restored. A small number of historic and original pews are reinstalled in the sanctuary enabling visitor seating.
 - The historic cylindrical cupola remains and was restored during the project to re-open the ventilation louvers that had previously been closed off from the interior. A decorative grille was recreated within the second-level ceiling that opens to the base of the cupola.
 - The cupola's roofing is new, based on the historic design, and integrates with the replacement painted metal standing seamed roof on the rest of the structure.
 - The pine flooring and wainscoting in the second-level sanctuary are original and have been restored.
 - The wall sconces and chandelier in the sanctuary are facsimiles based on photographs from the synagogue's early years.

SMITHGROUP

INTERVENTIONS REQUIRED FOR THE CAPITAL JEWISH MUSEUM PROJECT

- The history of repairs and multiple uses over time can be seen on the structure's exterior walls, where vintages of brick vary. The masonry was cleaned and partially repointed during this project.
- The ground level window and door openings were repeatedly altered over the structure's life to accommodate the various uses of the building. Windows on the second level were restored while first level windows were replaced.
- One of the greatest challenges to incorporating the historic synagogue into the new museum was addressing ADA access to museum without significantly altering the historic structure. Because the museum and synagogue sit above street-level, an ADA ramp was necessary to mitigate the elevation change. Several proposed design options were vetted, which ultimately led to a secondary ADA-accessible museum entrance from F Street that included a ramp.
- A code required setback from the historic structure for adjacent new construction would have been prohibitive due to the overall site size and constraints. The design team received a waiver to instead incorporate fire curtains to separate the new museum structure from the historic synagogue. SmithGroup's fire protection engineers worked closely with the firm's historic preservation experts to introduce fire doors and shutters within the synagogue's windows and doors on the south façade.
- Some interventions to the historic interior fabric of the synagogue were necessary to enable installation of contemporary exhibition technologies as well as modern building systems. For example, Existing masonry was sensitively channeled and patched to accommodate new infrastructure.

PROCESS

- The historic synagogue was digitally scanned after its relocation to the 3rd and F Street site, both inside and outside. This scanning enabled documentation and analysis of any shifting or movement of the structure that might have occurred during the transporting of it to its final location. The 3D scans translated into a highly accurate 3D model that was subsequently used to design the integration of modern systems (fire protection, life safety, power, HVAC, and AV/IT) within the historic fabric.

REVIEW AGENCIES

- District of Columbia Office of Planning and Historic Preservation Review Board (HPRB)
- Advisory Neighborhood Commission 2C
- DC District Department of Transportation (DDOT) Public Space Regulation Division (PSRD)

COMPANY FACT SHEET

SMITHGROUP

Design
a Better
Future

OVERVIEW

SmithGroup is one of the world’s preeminent integrated design firms. Working across a network of 20 offices in the U.S. and China, a team of 1,300 experts is committed to excellence in strategy, design and delivery. The scale of the firm’s thinking and organization produces partnerships with forward-looking clients that maximize opportunities, minimize risk and solve their most complex problems. SmithGroup creates exceptional design solutions for healthcare, science and technology organizations, higher education and cultural institutions, urban environments, diverse workplaces, mixed-use and waterfront developments, and parks and open spaces.

JUSTICE, EQUITY, DIVERSITY AND INCLUSION (J.E.D.I.)

SmithGroup is committed to championing and employing just polices and equitable frameworks to foster diverse representation and inclusive outcomes. We have pledged to confront our past and are taking action to dismantle systemic racism, injustice and inequity within SmithGroup, across our professions and in our work that impacts the built environment.

MEDIA INQUIRIES CONTACT

Dave Whitman
Communications Director
dave.whitman@smithgroup.com
313-442-8226 direct

MANAGING PARTNERS

Mike Medici, AIA - *President*
Russ Sykes, PE, LEED AP BD+C - *Chairman*
Troy Thompson, AIA, LEED AP BD+C - *CEO*

BOARD OF DIRECTORS

Bonnie Khang-Keating
Chris Purdy, AIA, LEED AP
Jame Anderson, AIA
Lauren Leighty, PLA, LEED AP BD+C
Mark Kranz, FAIA, NCARB, LEED AP BD+C
Mike Medici, AIA
Nancy Kohout, PE, LEED AP BD+C
Oscar Cobb, PE, LEED AP BD+C
Roxanne Malek, AIA, LEED AP BD+C
Russ Sykes, PE, LEED AP BD+C
Troy Thompson, AIA, LEED AP
Viral Amin, PE, NCEES, LEED AP



1,300 STAFF



20 OFFICES



WORK ON 6 CONTINENTS



\$354.1M REVENUE,
GROSS (2022)

SMITHGROUP

OUR NAME IS "SmithGroup"
—CAPITAL S, CAPITAL G, NO
SPACE, NO THE



SMITHGROUP DOES NOT
HAVE A HEADQUARTERS



400 DESIGN AWARDS IN THE
LAST FIVE YEARS, AND A
TOP-RANKED WORKPLACE



FIRST ESTABLISHED IN 1853,
AND PRACTICING INTEGRATED
DESIGN FOR MORE THAN A
CENTURY

COMPANY FACT SHEET

SMITHGROUP

Design
a Better
Future

CULTURAL PRACTICE

SmithGroup's Cultural practice encompasses a network of specialty expertise, including planning, programming and design of museums and galleries, archives and collections care, visitor and interpretive centers, children's museums, science centers, arts education, performing arts, exhibition and interpretive design and cultural landscapes. For more than half a century, the firm has delivered award-winning projects for some of the world's most iconic places and prestigious institutions, including many in our nation's capital.

LOCATIONS

Ann Arbor
Atlanta
Boston
Chicago
Cleveland
Dallas
Denver
Detroit
Houston
Los Angeles
Madison
Milwaukee
Phoenix
Pittsburgh
Portland
Sacramento
San Diego
San Francisco
Shanghai
Washington, D.C.

MARKETS

Cultural
Government
Healthcare
Higher Education
Hospitality & Resorts
Mixed-Use
Parks & Open Spaces
Residential
Science & Technology
Senior Living
Urban Environments
Waterfront
Workplace

SERVICES

Architecture
Building Enclosure Consulting
Campus Planning
Campus Strategy & Analytics
Civil Engineering
Coastal Engineering
Energy & Environmental Modeling
Fire Protection & Life Safety Engineering
Health Strategy
Historic Preservation
Interiors
Lab Planning
Landscape Architecture
Lighting Design
Medical Planning
MEP Engineering
Programming
Strategy
Structural Engineering
Sustainable Design
Urban Design
Urban Planning
Workplace Strategy

SELECT CULTURAL PROJECTS

National Museum of African American History & Culture, Washington, DC

National Museum of the American Indian, Washington, DC

Arts & Industries Building Restoration, Washington, DC

National Portrait Museum, Kogod Courtyard, Washington, DC

United States Holocaust Memorial Museum Collections and Conservation Center, Maryland

White House Visitors Center, Washington, DC

Museum of the Bible, Washington, DC

Virginia Museum of Fine Art, Expansion & Renovation, Richmond, Virginia

Thomas Gilcrease Institute of American Art and History, Tulsa, Oklahoma

Richmond National Slavery Museum, Richmond, Virginia

Normandy American Cemetery Visitor Center, Colleville-sur-Mer, Normandy, France

Cranbrook Art Museum Renovation & Collections Addition, West Bloomfield, Michigan

RANKINGS

Architectural Record Top 300 Architecture Firms (#16)

Building Design World Architecture WA100 (#14)

Building Design + Construction Giants (#5)

Consulting-Specifying Engineer MEP Giants (#32)

Engineering News-Record Top 500 (#63)

Interior Design Top 100 Giants (#10)